

3D

SHAPED
TECHNOLOGY

INLAYS

geometrie in movimento

EDIMAX
CERAMICHE
ASTOR



WHISPER Dec. Links 60x120 RET - WHISPER Dec. Fabrics 30x60 RET

LINKS | Whisper_Collection



WHISPER Dec. Links 60x120 RET

FABRICS

Whisper_Collection



WHISPER Dec. Fabrics 30x60 RET

LINKS

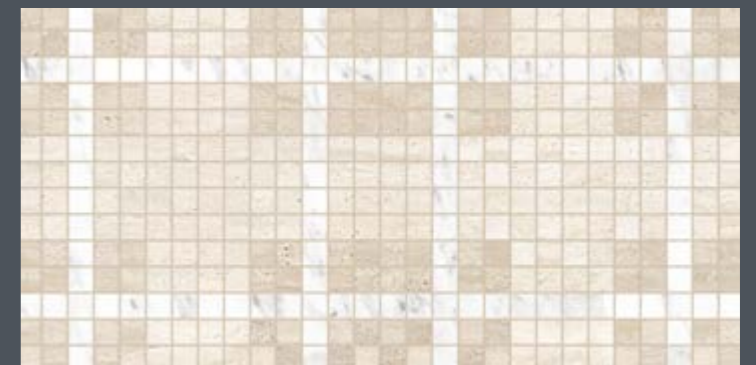
Whisper_Collection



≈ 9 MM
DEC. LINKS
60X120 (24"X48") RET
6QD8

FABRICS

Whisper_Collection



≈ 9 MM
DEC. FABRICS
30X60 (12"X24") RET
1J76



WHISPER Dec. Hexagones 60x120 RET

HEXAGONES

Whisper_Collection



WHISPER Dec. Hexagones 60x120 RET



HEXAGONES

Whisper_Collection



9 MM
DEC. HEXAGONES
60X120 (24"X48") RET
6QD6



WHISPER Dec. Frames 60x120 RET

FRAMES

Whisper_Collection



WHISPER Dec. Frames 60x120 RET



FRAMES

Whisper_Collection



9 MM
DEC. FRAMES
60X120 (24"X48") RET
6QD7



FLAIRS Milk Dec. Square 60x60 RET

SQUARE

Flairs_Collection



FLAIRS Milk Dec. Square 60x60 RET



SQUARE

Flairs_Collection



9 MM
MILK DEC. SQUARE
60X60 (24"X24") RET
7F61



ECHOES Dec. Scott 60x60 CUSH RET

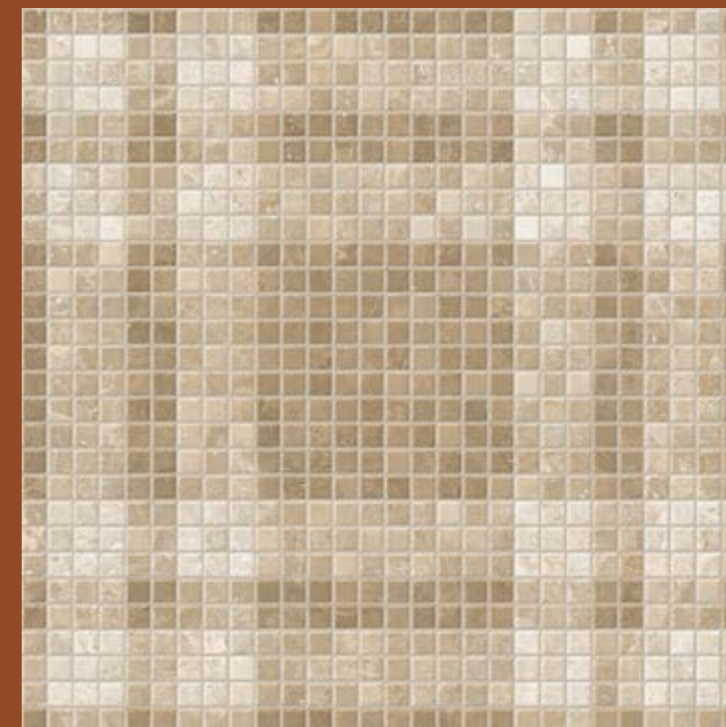
SCOTT | Echoes_Collection



ECHOES Dec. Scott 60x60 CUSH RET



SCOTT | Echoes_Collection



≠ 9 MM
DEC. SCOTT
60X60 (24"X24") CUSH RET
7MM5



ECHOES Dec. Gingham 60x60 CUSH RET

GINGHAM

Echoes_Collection

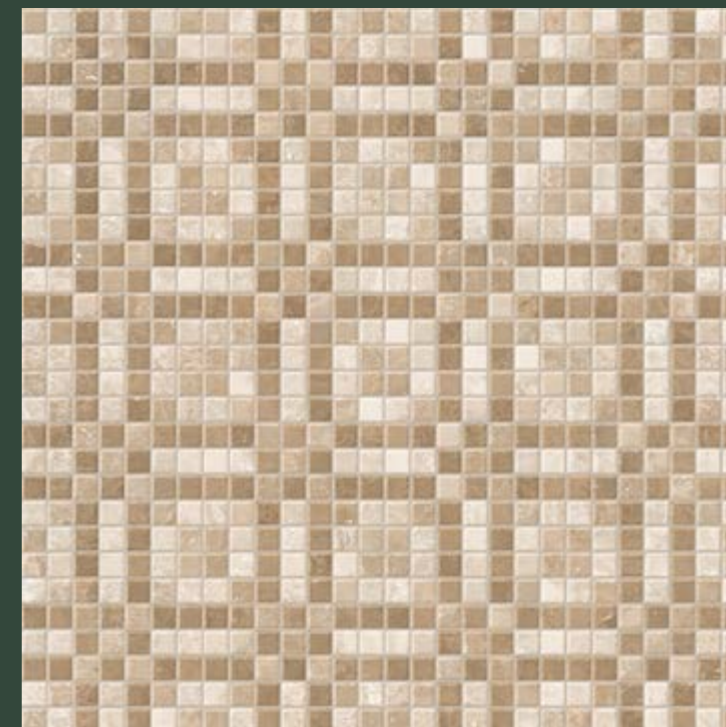


ECHOES Dec. Gingham 60x60 CUSH RET



GINGHAM

Echoes_Collection



≡ 9 MM
DEC. GINGHAM
60X60 (24"X24") CUSH RET
7MO5



PATHOS Dec. Calle 60x120 RET

CALLE | Pathos_Collection



PATHOS Dec. Calle 60x120 RET



CALLE

 | Pathos_Collection

≡ 9 MM
DEC. CALLE
60X120 (24"X48") RET
6L30



PATHOS Dec. Anelli 60x120 RET



PATHOS Dec. Anelli 60x120 RET



ANELLI | Pathos_Collection



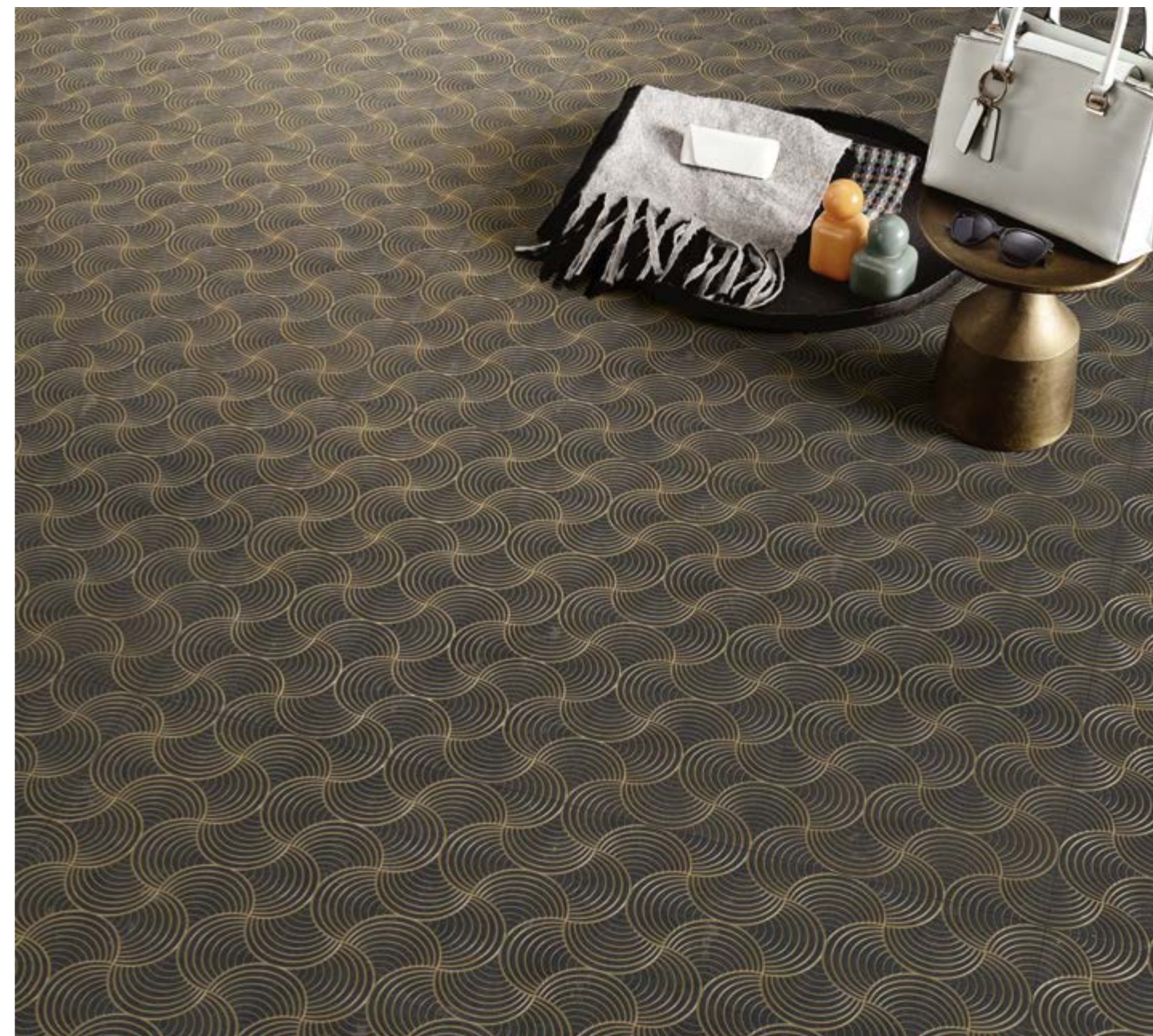
9 MM
DEC. ANELLI
60X120 (24"X48") RET
6L46



PATHOS Dec. Arabesco 60x120 RET

ARABESCO

Pathos_Collection



PATHOS Dec. Arabesco 60x120 RET



ARABESCO

Pathos_Collection



9 MM
DEC. ARABESCO
60X120 (24"X48") RET
4132



PATHOS Dec. Intrecci 60x120 RET

INTRECCI

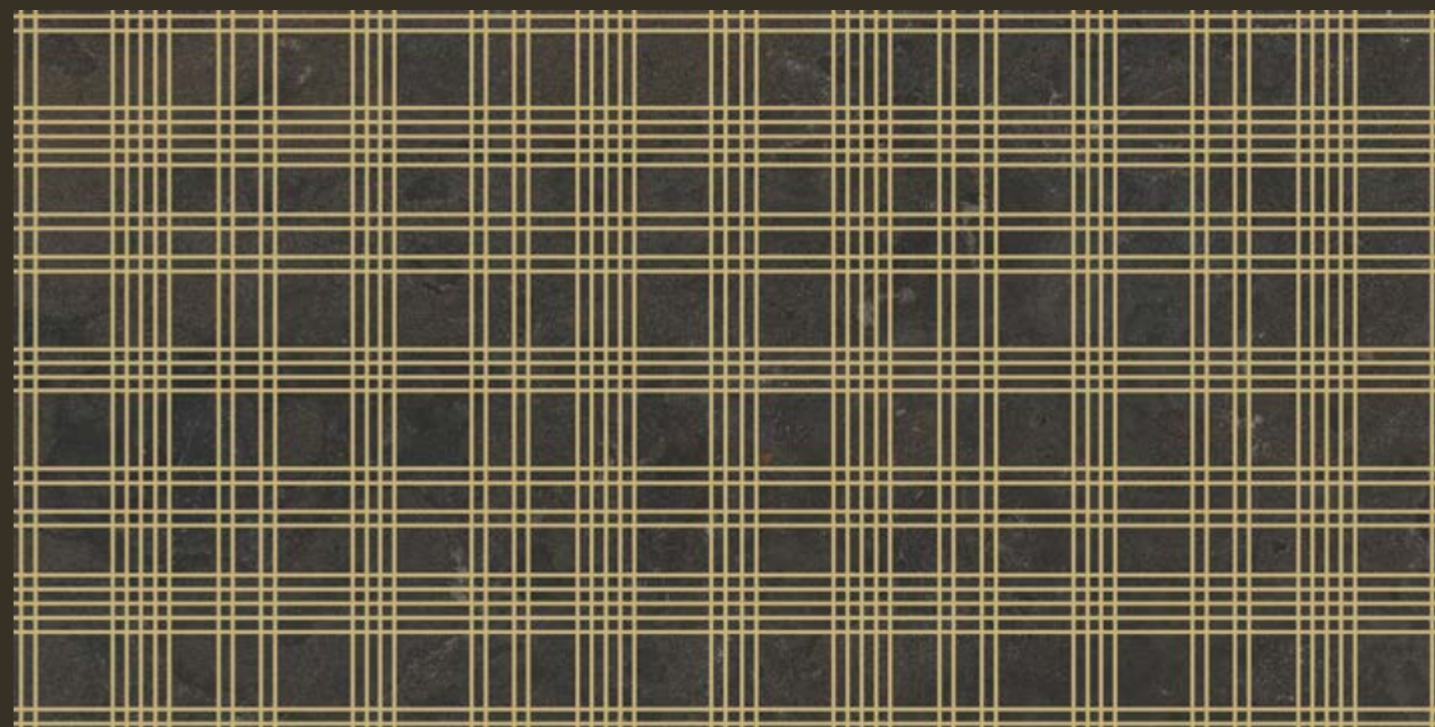
Pathos_Collection



PATHOS Dec. Intrecci 60x120 RET



INTRECCI

 | Pathos_Collection

9 MM
DEC. INTRECCI
60X120 (24"X48") RET
4133



RÊVE Dec. Octogone 60x120 RET

OCTOGONE

Rêve_Collection

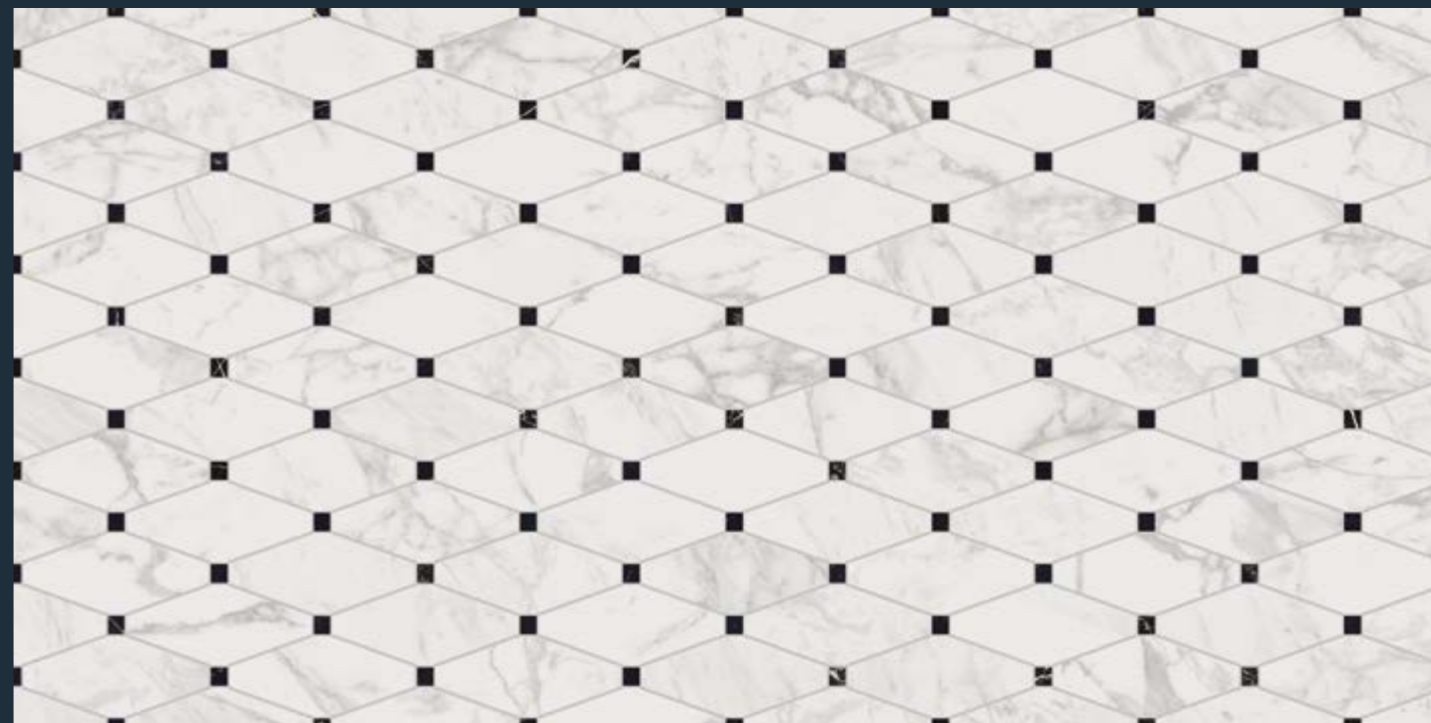


RÊVE Dec. Octogone 60x120 RET



OCTOGONE

Rêve_Collection



9 MM
DEC. OCTOGONE
60X120 (24"X48") RET
4128



RÊVE Dec. Cubes 60x120 RET

CUBES

Rêve_Collection



RÊVE Dec. Cubes 60x120 RET



CUBES

Rêve_Collection



9 MM
DEC. CUBES
60X120 (24"X48") RET
4125



RÊVE Dec. Ovales 60x120 RET

OVALES

Rêve_Collection

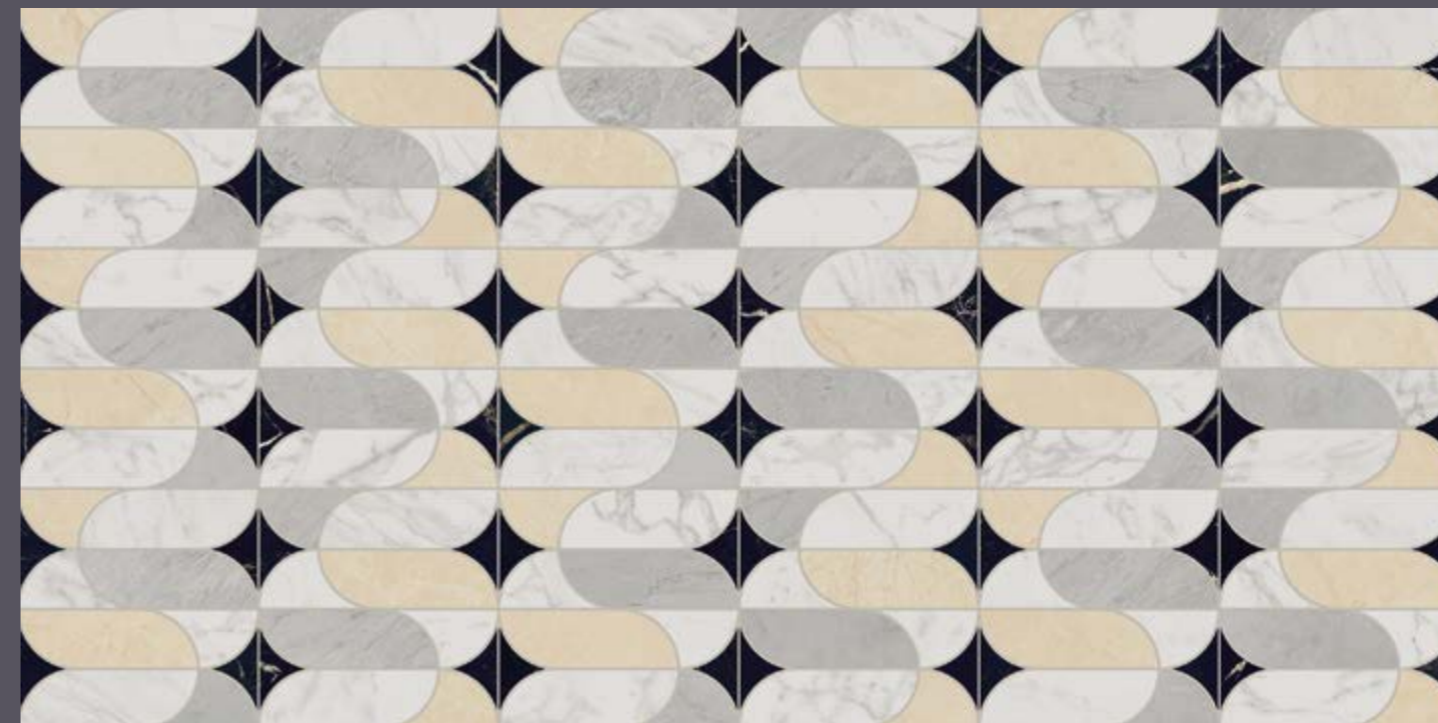


RÊVE Dec. Ovales 60x120 RET



OVALES

Rêve_Collection



9 MM
DEC. OVALES
60X120 (24"X48") RET
4123



RÊVE Dec. Quadrifolié 60x120 RET

QUADRIFOLIÉ

Rêve_Collection



RÊVE Dec. Quadrifolié 60x120 RET



QUADRIFOLIÉ

Rêve_Collection



9 MM
DEC. QUADRIFOLIÉ
60X120 (24"X48") RET
4124



RÊVE Dec. Cercles-Carrés 60x120 RET

CERCLES-CARRÉS

Rêve_Collection

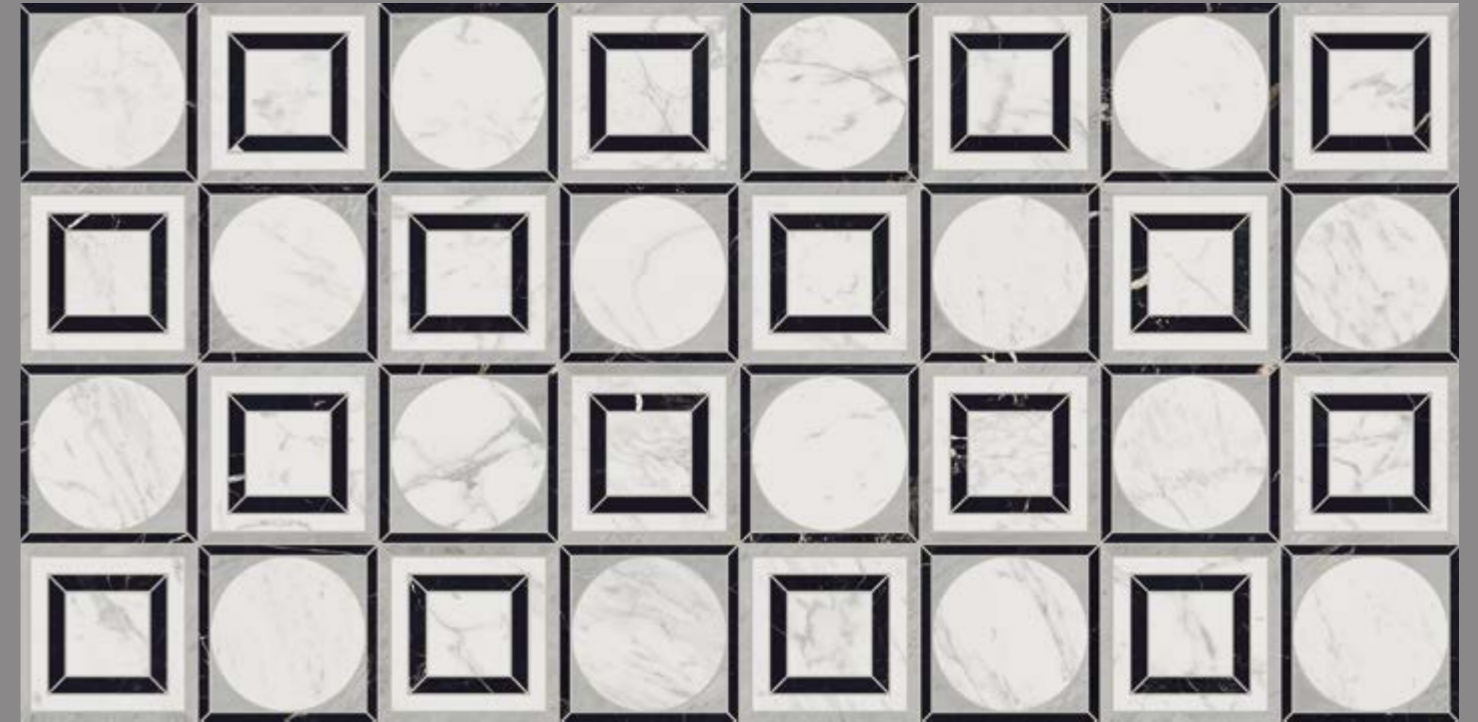


RÊVE Dec. Cercles-Carrés 60x120 RET



CERCLES-CARRÉS

Rêve_Collection



≡ 9 MM
CERCLES-CARRÉS
60X120 (24"X48") RET
4126



RÊVE Dec. Anneaux 60x120 RET

ANNEAUX

Rêve_Collection

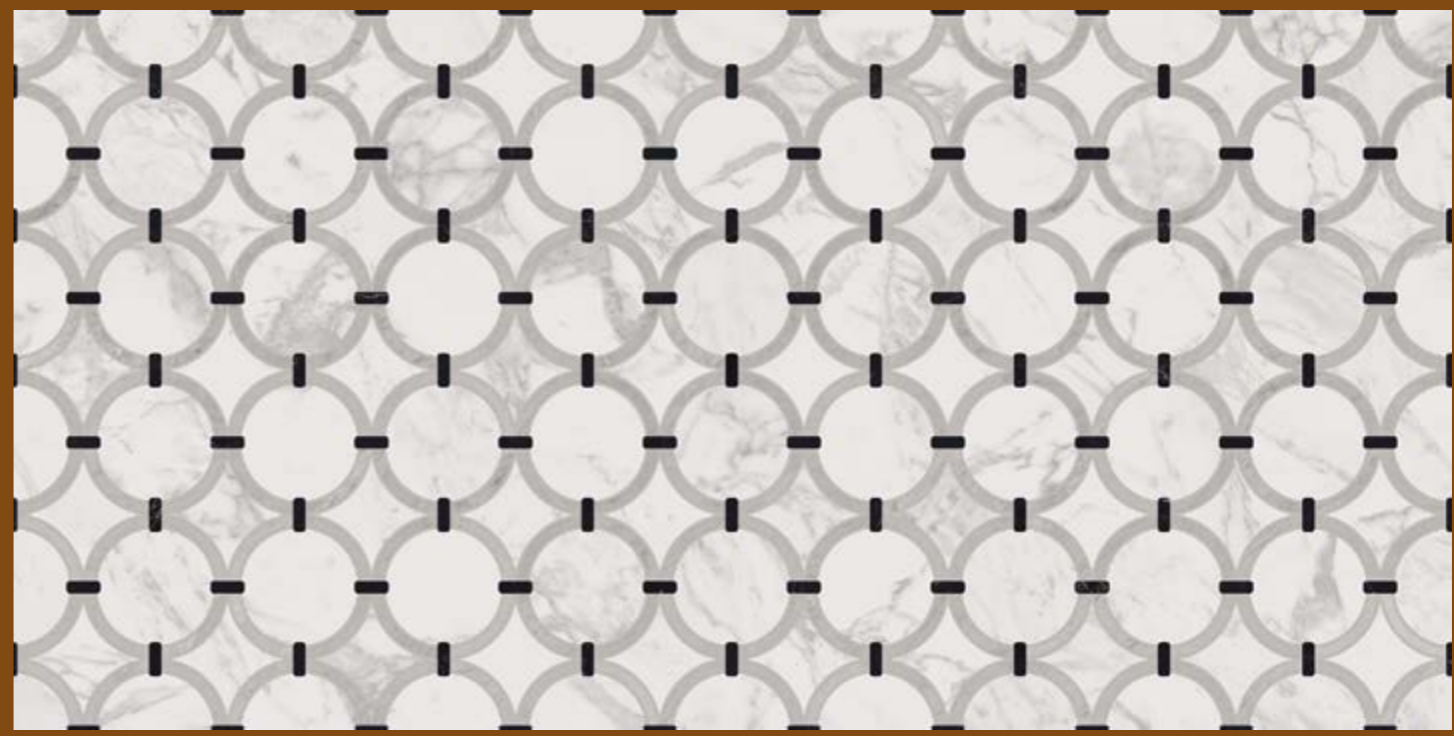


RÊVE Dec. Anneaux 60x120 RET



ANNEAUX

Rêve_Collection



≡ 9 MM
DEC. ANNEAUX
60X120 (24"X48") RET
4127



TALES Dec. Hoop 60x120 RET

HOOP

Tales_Collection



TALES Dec. Hoop 60x120 RET



HOOP

Tales_Collection



≡ 9 MM
DEC. HOOP
60X120 (24"X48") RET
6L40



SHADE Dec. Impression 30x60 RET

IMPRESSION

Shade_Collection



SHADE Dec. Impression 30x60 RET



IMPRESSION

Shade_Collection



9 MM

DEC. IMPRESSION

30X60 (12"X24") RET

3J58



CHARME Dec. Gems 60x120 RET

GEMS

Charme_Collection



CHARME Dec. Gems 60x120 RET



GEMS

Charme_Collection



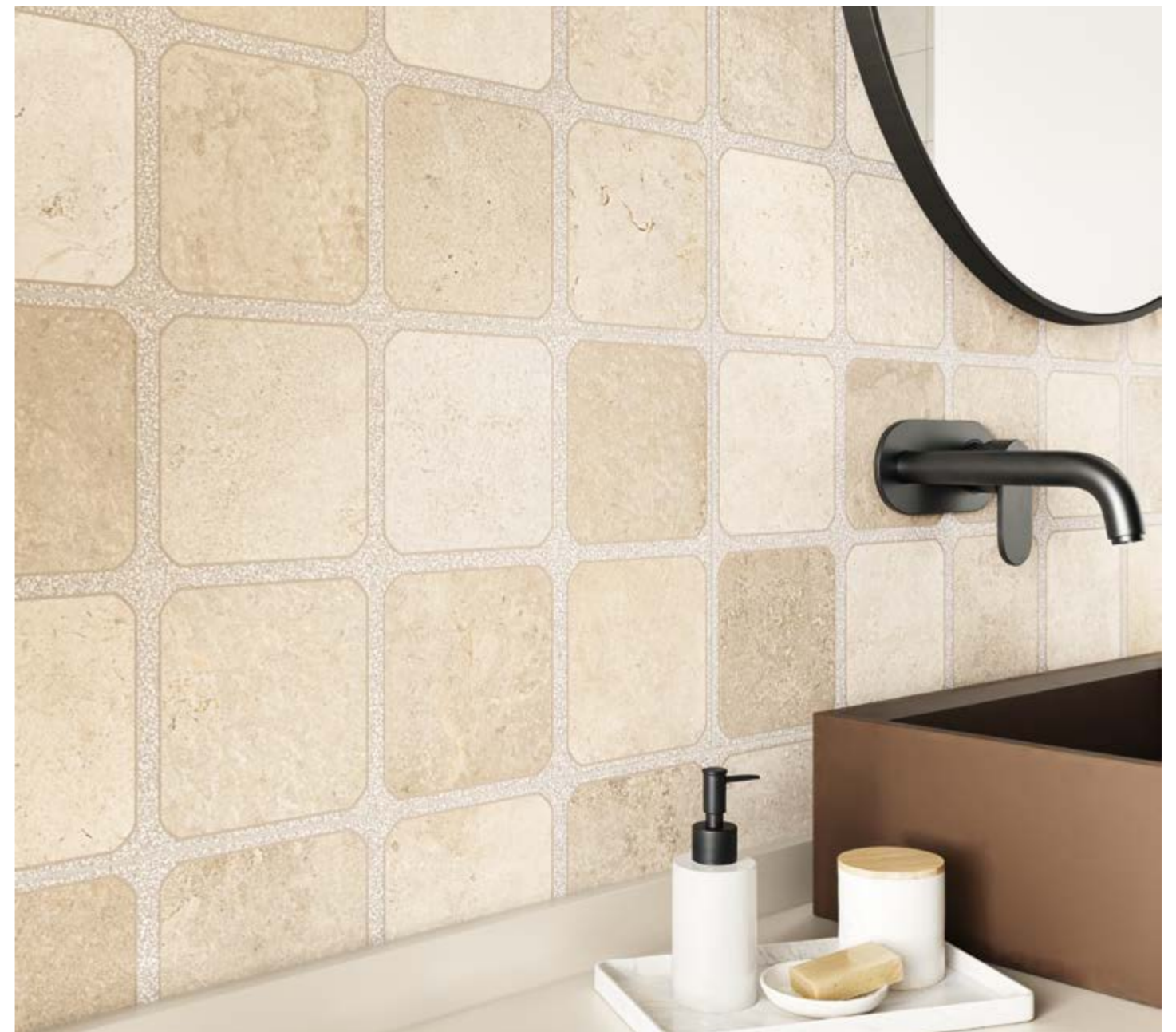
≡ 9 MM
DEC. GEMS
60X120 (24"X48") RET
4D39



WIND Dunelight Dec. Carved 30x60 RET

CARVED

Wind_Collection



WIND Dunelight Dec. Carved 30x60 RET



CARVED

Wind_Collection



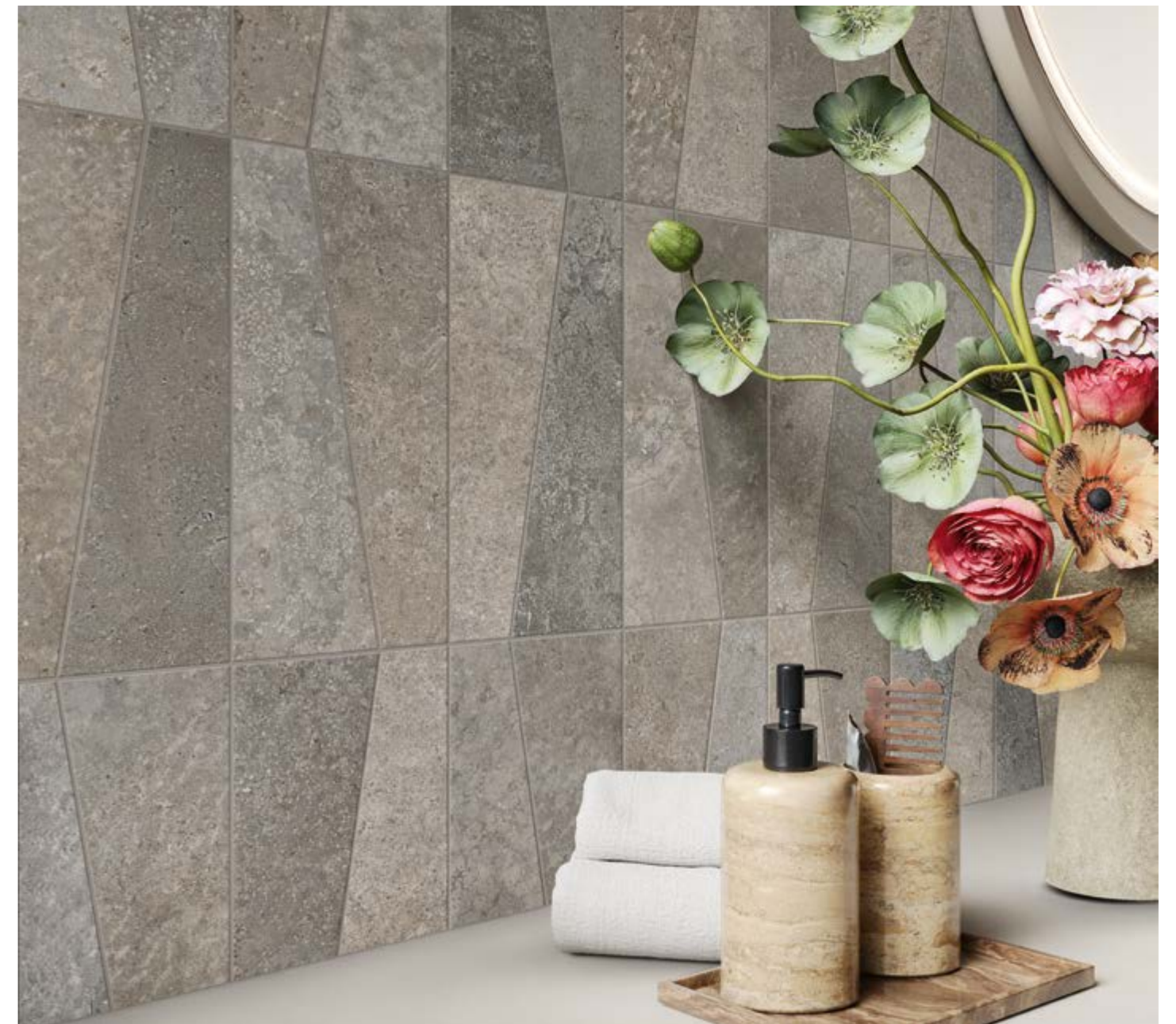
9 MM
DUNELIGHT DEC. CARVED
30X60 (12"X24") RET
2J65



WIND Prairiemoss Trapezi 30x60 RET

TRAPEZI

Wind_Collection



WIND Prairiemoss Trapezi 30x60 RET



TRAPEZI

Wind_Collection



≡ 9 MM
PRAIRIEMOSS TRAPEZI
30X60 (12"X24") RET
KG14



WOLDS Bone Drawer 30x60 RET

DRAWER

Wolds_Collection



WOLDS Bone Drawer 30x60 RET



DRAWER

Wolds_Collection



9 MM
BONE DRAWER
30X60 (12"X24") RET
1J77

FERNS / TRAPEZI

Wolds_Collection



WOLDS Laurel Ferns 60x120 RET - WOLDS Laurel Trapezi 30x60 RET



WOLDS Laurel Ferns 60x120 RET - WOLDS Laurel Trapezi 30x60 RET



9 MM
LAUREL FERNS
60X120 (24"X48") RET
6L50

FERNS | Wolds_Collection



TRAPEZI | Wolds_Collection



9 MM
LAUREL TRAPEZI
30X60 (12"X24") RET
KG18

Whisper_Collection

LINKS



≠ 9 MM
DEC. 60X120 (24"X48") RET
6QD8 LINKS

FABRICS



≠ 9 MM
DEC. 30X60 (12"X24") RET ★★
1J76 FABRICS

Echoes_Collection

SCOTT



≠ 9 MM
DEC. 60X60 (24"X24") CUSH RET ★
7MM5 SCOTT

GINGHAM



≠ 9 MM
DEC. 60X60 (24"X24") CUSH RET ★
7M05 GINGHAM

HEXAGONES



≠ 9 MM
DEC. 60X120 (24"X48") RET
6QD6 HEXAGONES

FRAMES



≠ 9 MM
DEC. 60X120 (24"X48") RET
6QD7 FRAMES

Pathos_Collection

CALLE



≠ 9 MM
DEC. 60X120 (24"X48") RET ★
6L30 CALLE

ANELLI



≠ 9 MM
DEC. 60X120 (24"X48") RET ★
6L46 ANELLI

Flairs_Collection

SQUARE



≠ 9 MM
DEC. SQUARE 60X60 (24"X48") RET ★
7F61 MILK



≠ 9 MM
DEC. SQUARE 60X60 (24"X48") RET ★
7F62 CREAM



≠ 9 MM
DEC. SQUARE 60X60 (24"X48") RET ★
7F63 ROSE

ARABESCO



≠ 9 MM
DEC. 60X120 (24"X48") RET
4I32 ARABESCO

INTRECCI



≠ 9 MM
DEC. 60X120 (24"X48") RET
4I33 INTRECCI

Rêve_Collection

OCTOGONE



≅ 9 MM
DEC. 60X120 (24"X48") RET ★
4128 OCTOGONE

CUBES



≅ 9 MM
DEC. 60X120 (24"X48") RET ★
4125 CUBES

Tales_Collection

HOOP



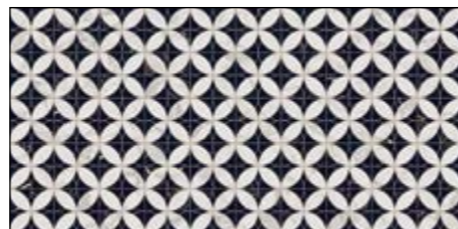
≅ 9 MM
DEC. 60X120 (24"X48") RET ★
6L40 HOOP

OVALES



≅ 9 MM
DEC. 60X120 (24"X48") RET ★
4123 OVALES

QUADRIFOLIÉ



≅ 9 MM
DEC. 60X120 (24"X48") RET ★
4124 QUADRIFOLIÉ

Shade_Collection

IMPRESSION



≅ 9 MM
DEC. 60X120 (24"X48") RET ★★★★★
4C28 IMPRESSION



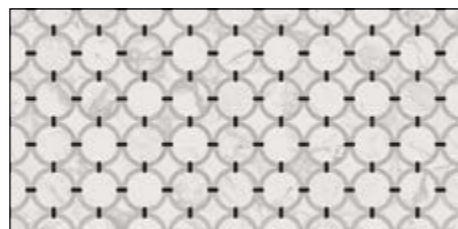
≅ 9 MM
DEC. 30X60 (12"X24") RET ★★
3J58 IMPRESSION

CERCLES-CARRÉS



≅ 9 MM
DEC. 60X120 (24"X48") RET ★
4126 CERCLES-CARRÉS

ANNEAUX



≅ 9 MM
DEC. 60X120 (24"X48") RET ★
4127 ANNEAUX

Charme_Collection

GEMS



≅ 9 MM
DEC. 60X120 (24"X48") RET ★★★
4D39 GEMS



≅ 9 MM
DEC. 30X60 (12"X24") RET ★★★★★
H155 GEMS

★ N° 8 GRAFICHE MISCELATE CASUALMENTE - N° 8 GRAPHICS CASUALLY MIXED - N° 8 GRAPHIKE ZUFAELLIG GEMISCHT - N° 8 GRAPHIQUES MÉLANGÉES DE MANIÈRE ALÉATOIRE
★★ N° 16 GRAFICHE MISCELATE CASUALMENTE - N° 16 GRAPHICS CASUALLY MIXED - N° 16 GRAPHIKE ZUFAELLIG GEMISCHT - N° 16 GRAPHIQUES MÉLANGÉES DE MANIÈRE ALÉATOIRE
★★★ N° 12 GRAFICHE MISCELATE CASUALMENTE - N° 12 GRAPHICS CASUALLY MIXED - N° 12 GRAPHIKE ZUFAELLIG GEMISCHT - N° 12 GRAPHIQUES MÉLANGÉES DE MANIÈRE ALÉATOIRE
★★★★ N° 48 GRAFICHE MISCELATE CASUALMENTE - N° 48 GRAPHICS CASUALLY MIXED - N° 48 GRAPHIKE ZUFAELLIG GEMISCHT - N° 48 GRAPHIQUES MÉLANGÉES DE MANIÈRE ALÉATOIRE
★★★★★ N° 6 GRAFICHE MISCELATE CASUALMENTE - N° 6 GRAPHICS CASUALLY MIXED - N° 6 GRAPHIKE ZUFAELLIG GEMISCHT - N° 6 GRAPHIQUES MÉLANGÉES DE MANIÈRE ALÉATOIRE

Wind_Collection

CARVED



≅ 9 MM
DEC. CARVED 30X60 (12\"X24\") RET **
2J65 DUNELIGHT



≅ 9 MM
DEC. CARVED 30X60 (12\"X24\") RET **
2J66 SUNWASHED



≅ 9 MM
DEC. CARVED 30X60 (12\"X24\") RET **
2J67 CLOUDRIFT



≅ 9 MM
DEC. CARVED 30X60 (12\"X24\") RET **
2J68 PRAIRIEMOSS

TRAPEZI



≅ 9 MM
TRAPEZI 30X60 (12\"X24\") RET *
KG11 DUNELIGHT



≅ 9 MM
TRAPEZI 30X60 (12\"X24\") RET *
KG12 SUNWASHED



≅ 9 MM
TRAPEZI 30X60 (12\"X24\") RET *
KG13 CLOUDRIFT



≅ 9 MM
TRAPEZI 30X60 (12\"X24\") RET *
KG14 PRAIRIEMOSS

Wolds_Collection [Ⓕ]

TRAPEZI



≅ 9 MM
TRAPEZI 30X60 (12\"X24\") RET *
KG15 BONE



≅ 9 MM
TRAPEZI 30X60 (12\"X24\") RET *
KG16 OAT



≅ 9 MM
TRAPEZI 30X60 (12\"X24\") RET *
KG17 SILT



≅ 9 MM
TRAPEZI 30X60 (12\"X24\") RET *
KG18 LAUREL

Wolds_Collection [Ⓕ]

FERNS



≅ 9 MM
FERNS 60X120 (24\"X48\") RET
6L47 BONE



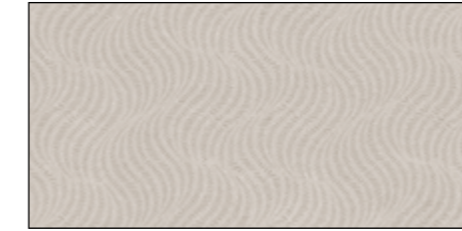
≅ 9 MM
FERNS 30X60 (12\"X24\") RET *
J1D1 BONE



≅ 9 MM
FERNS 60X120 (24\"X48\") RET
6L48 OAT



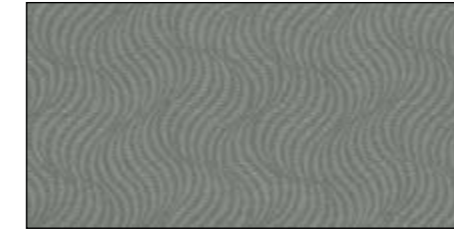
≅ 9 MM
FERNS 30X60 (12\"X24\") RET *
J1D2 OAT



≅ 9 MM
FERNS 60X120 (24\"X48\") RET
6L49 SILT



≅ 9 MM
FERNS 30X60 (12\"X24\") RET *
J1D3 SILT



≅ 9 MM
FERNS 60X120 (24\"X48\") RET
6L50 LAUREL



≅ 9 MM
FERNS 30X60 (12\"X24\") RET *
J1D4 LAUREL

DRAWER



≅ 9 MM
DRAWER 30X60 (12\"X24\") RET **
1J77 BONE



≅ 9 MM
DRAWER 30X60 (12\"X24\") RET **
1J78 OAT



≅ 9 MM
DRAWER 30X60 (12\"X24\") RET **
1J79 SILT



≅ 9 MM
DRAWER 30X60 (12\"X24\") RET **
1J80 LAUREL

[Ⓕ] FEELTECH È UNA TECNOLOGIA DIGITALE DI SINCRONIZZAZIONE TRA TRIDIMENSIONALITÀ MATERICA E GRAFICA IN QUADRICROMIA ENTRAMBI IN ALTISSIMA DEFINIZIONE, PER UNA REALIZZAZIONE DI SUPERFICI REALISTICHE SIA ALLA VISTA CHE AL TATTO - FEELTECH IS A DIGITAL SYNCHRONIZATION TECHNOLOGY BETWEEN MATERIAL THREE-DIMENSIONALITY AND FOUR-COLOR GRAPHICS, BOTH IN ULTRA-HIGH DEFINITION, ENABLING THE CREATION OF SURFACES THAT ARE REALISTIC BOTH VISUALLY AND TO THE TOUCH - FEELTECH EST UNE TECHNOLOGIE NUMÉRIQUE DE SYNCHRONISATION ENTRE LA TRIDIMENSIONNALITÉ MATÉRIELLE ET LE GRAPHISME EN QUADRICROMIE, TOUS DEUX EN TRÈS HAUTE DÉFINITION, PERMETTANT LA RÉALISATION DE SURFACES RÉALISTES TANT À LA VUE QU'AU TOUCHER - FEELTECH IST EINE DIGITALE TECHNOLOGIE ZUR SYNCHRONISIERUNG ZWISCHEN DREIDIMENSIONALER MATERIALITÄT UND VIERFARBDRUCK, BEIDE IN HÖCHSTER AUFLÖSUNG, FÜR DIE REALISIERUNG VON OBERFLÄCHEN, DIE SOWOHL OPTISCH ALS AUCH HAPTISCH REALISTISCH SIND

* N° 16 GRAFICHE MISCELATE CASUALMENTE - N° 16 GRAPHICS CASUALLY MIXED - N° 16 GRAPHIKE ZUFAELLIG GEMISCHT - N° 16 GRAPHIQUES MÉLANGÉES DE MANIÈRE ALÉATOIRE
** N° 32 GRAFICHE MISCELATE CASUALMENTE - N° 32 GRAPHICS CASUALLY MIXED - N° 32 GRAPHIKE ZUFAELLIG GEMISCHT - N° 32 GRAPHIQUES MÉLANGÉES DE MANIÈRE ALÉATOIRE

* N° 4 GRAFICHE MISCELATE CASUALMENTE - N° 4 GRAPHICS CASUALLY MIXED - N° 4 GRAPHIKE ZUFAELLIG GEMISCHT - N° 4 GRAPHIQUES MÉLANGÉES DE MANIÈRE ALÉATOIRE
** N° 32 GRAFICHE MISCELATE CASUALMENTE - N° 32 GRAPHICS CASUALLY MIXED - N° 32 GRAPHIKE ZUFAELLIG GEMISCHT - N° 32 GRAPHIQUES MÉLANGÉES DE MANIÈRE ALÉATOIRE

CARATTERISTICHE TECNICHE: PAVIMENTI E RIVESTIMENTI IN GRES PORCELLANATO SMALTATO IMPASTI COLORATI TECHNICAL CHARACTERISTICS: GLAZED PORCELAIN COLOURED BODY FLOOR AND WALL TILES TECHNISCHE EIGENSCHAFTEN: BODEN UND WANDFLIESEN AUS GLAZIERT DURCHGEFÄRBLICHE FEINSTEINZEUG CARACTÉRISTIQUES TECHNIQUES: REVÊTEMENTS SOLS ET MURS EN GRÉS CÉRAME ÉMAILLÉ COLORÉ EN MASSE													
	Spessore Thickness Stärke Epaisseur	Formatura del prodotto Product Moulding Produkt Formung Moulage du produit	ISO 10545-3 B la	ISO 10545-4	ISO 10545-7	ISO 10545-9	ISO 10545-12	ISO 10545-13	ISO 10545-14	BS EN16165 Annex C	AS/NZS 4586-13 Annex A	DCOF	DIN EN 16165 Annex B DIN EN 16165 Annex A
Charme 3D	9	RET	< 0,5%	≥ 43 N/mm ²	5	Garantita Guaranteed Garantiert Garantie	Garantita Guaranteed Garantiert Garantie	GA (V) GLA (V) GHA (V)	Conforme Compliant Conforme Konforme	-	-	> 0,42	R9 A
Echoes 3D	9	RET	< 0,5%	≥ 43 N/mm ²	5	Garantita Guaranteed Garantiert Garantie	Garantita Guaranteed Garantiert Garantie	GA (V) GLA (V) GHA (V)	Conforme Compliant Conforme Konforme	-	-	> 0,42	R9 B
Flairs 3D	9	RET	< 0,5%	≥ 43 N/mm ²	5	Garantita Guaranteed Garantiert Garantie	Garantita Guaranteed Garantiert Garantie	GA (V) GLA (V) GHA (V)	Conforme Compliant Conforme Konforme	-	-	> 0,42	R9 -
Pathos 3D	9	RET	< 0,5%	≥ 43 N/mm ²	5	Garantita Guaranteed Garantiert Garantie	Garantita Guaranteed Garantiert Garantie	GA (V) GLA (V) GHA (V)	Conforme Compliant Conforme Konforme	-	-	> 0,42	R9 -
Rêve 3D BEIGE - BLANC GRIS - ROSE	9	RET	< 0,5%	≥ 43 N/mm ²	5	Garantita Guaranteed Garantiert Garantie	Garantita Guaranteed Garantiert Garantie	GA (V) GLA (V) GHA (V)	Conforme Compliant Conforme Konforme	-	-	> 0,42	R9 A
Rêve 3D NOIR	9	RET	< 0,5%	≥ 43 N/mm ²	5	Garantita Guaranteed Garantiert Garantie	Garantita Guaranteed Garantiert Garantie	GA (V) GLA (V) GHA (V)	Conforme Compliant Conforme Konforme	-	-	> 0,42	R10 A
Shade 3D	9	RET	< 0,5%	≥ 43 N/mm ²	5	Garantita Guaranteed Garantiert Garantie	Garantita Guaranteed Garantiert Garantie	GA (V) GLA (V) GHA (V)	Conforme Compliant Conforme Konforme	36 +	P 3	> 0,42	R9 A+B
Tales 3D	9	RET	< 0,5%	≥ 43 N/mm ²	5	Garantita Guaranteed Garantiert Garantie	Garantita Guaranteed Garantiert Garantie	GA (V) GLA (V) GHA (V)	Conforme Compliant Conforme Konforme	-	-	> 0,42	R10 A
Whisper 3D	9	RET	< 0,5%	≥ 43 N/mm ²	5	Garantita Guaranteed Garantiert Garantie	Garantita Guaranteed Garantiert Garantie	GA (V) GLA (V) GHA (V)	Conforme Compliant Conforme Konforme	-	-	> 0,42	R9 -
Wind 3D	9	RET	< 0,5%	≥ 43 N/mm ²	5	Garantita Guaranteed Garantiert Garantie	Garantita Guaranteed Garantiert Garantie	GA (V) GLA (V) GHA (V)	Conforme Compliant Conforme Konforme	-	-	> 0,42	R9 A
Wolds Feeltech	9	RET	< 0,5%	≥ 43 N/mm ²	5	Garantita Guaranteed Garantiert Garantie	Garantita Guaranteed Garantiert Garantie	GA (V) GLA (V) GHA (V)	Conforme Compliant Conforme Konforme	36 +	P 3	> 0,42	R10 B

INFORMAZIONI GENERALI - GENERAL INFORMATION

- Prodotto in porcellanato smaltato con impasti colorati. Superfici naturali. 3D Shaped Technology. Feeltech Technology. Bordi rettificati e bordi arrotondati. Coloured body glazed porcelain tiles and rectified edges. Natural surfaces. 3D Shaped Technology. Feeltech Technology. Rectified edges and cushioning edges.
- Tutte le misure sono nominali. Le conversioni in pollici sono approssimate ed arrotondate. All sizes are nominal. The conversions into inches are approximate and rounded off.
- Le confezioni contengono il prodotto con diverse sfumature di tono. Al fine di ottenere il migliore effetto estetico, si consiglia, durante la posa, di prelevare le piastrelle alternativamente da scatole diverse e di posarle in senso ortogonale l'una all'altra. The boxes contain the item with different shade variegations. When you lay down the tiles, in order to obtain the best blend of the colours, we advice you to take the tiles alternatively from different boxes and lay down orthogonally one to the other.
- Per i formati rettangolari consigliamo una posa sfalsata massimo di 1/4 della lunghezza. For the rectangular sizes we suggest an installation pattern at a maximum of 1/4 of the entire length.
- Bordi rettificati: nella posa mono e multi-formato è consigliato prevedere fughe di almeno 2 mm. Rectified edges: when you lay down single and multi sizes it is suggested to use grouts of at least 2 mm.
- Ci riserviamo la facoltà di modificare e/o eliminare i formati, i calibri, gli spessori e le grafiche in qualsiasi momento senza che si renda necessaria una espressa comunicazione scritta. We reserve the right to modify and/or remove the sizes, the calibers, the thickness and the graphics anytime, with no obligation of a further notice in writing.
- I toni degli articoli campionati sono puramente indicativi pertanto le variazioni di tono e di superficie non possono costituire motivo di contestazioni. The shades of the samples are purely representative of the item itself so the shades variation and the surfaces variations cannot constitute the reason for a claim.
- Fondi, decori, mosaici, pezzi speciali o qualsiasi formato da taglio o rettifica, vengono prodotti uno ad uno con interventi manuali ed artigianali durante la fase di lavorazione. Eventuali imperfezioni rientrano nelle tolleranze e non possono essere considerate difetti. Plain tiles, decors, mosaics, special pieces or any item cut or rectified are produced one by one with manual and artisanal interventions during the manufacturing phase. Any possible imperfection is within the tolerances and cannot be considered as a defect/fault.

SIMBOLOGIA - SIMBOLOGY

RET Rettificato
Rectified

CUSH Bordi arrotondati
Cushing edges

★ Grafiche miscelate casualmente
Graphics casually mixed

Ⓢ Feeltech Technology
Feeltech Technology



3D Shaped Technology è una nuova lavorazione digitale che si inserisce nel processo produttivo per conferire il massimo realismo ai prodotti ceramici, attraverso un procedimento superficiale che ne esalta la conformazione preservando le caratteristiche di robustezza, durezza e facilità di pulizia tipiche del gres porcellanato.

Coniugando visione e tatto in una realizzazione iperrealistica senza vincoli né limiti, la tecnologia 3D Shaped rompe gli schemi del concetto tradizionale di materia ceramica che, da una visione bidimensionale, passa a una realizzazione tridimensionale dove ogni dettaglio prende forma, colore e struttura.

Novità e avanguardia sono quanto caratterizza l'esclusiva 3D Shaped Technology che ha portato alla ribalta un'innovazione che ha cambiato radicalmente il concetto di superficie ceramica.

3D Shaped Technology is a new digital process that is inserted in the production process to give maximum realism to ceramic products, through a surface forming process that enhances its conformation while preserving the characteristics of strength, durability and ease of cleaning typical of porcelain stoneware.

Combining vision and touch in a hyper-realistic realization without constraints or limits, 3D Shaped technology breaks the rules of the traditional concept of ceramic material which, from a two-dimensional vision, passes to a three-dimensional realization where every detail takes shape, colour and structure.

Development to find ever new technologies, able to offer all vanguard for the main international markets.

NOTE

A series of horizontal dotted lines for taking notes, spanning the width of the page.

EDIMAX
CERAMICHE
ASTOR

Gruppo Beta S.p.A. 41014 Solignano Nuovo (MO) Italy - Statale 569 n°234 tel. +39 059 748911 - fax +39 059 748990
www.edimaxastor.it - info@edimaxastor.it